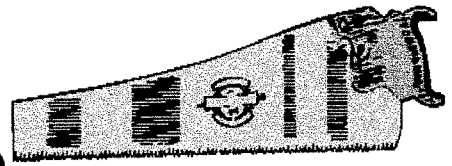


aw

(as in saw)
(at the end of a word)



saw raw law paw jaw claw

flaw draw thaw straw

“saw the wood” “raw meat” “broke the law”

“bird’s claw” “the snow will thaw soon” “a straw hat”

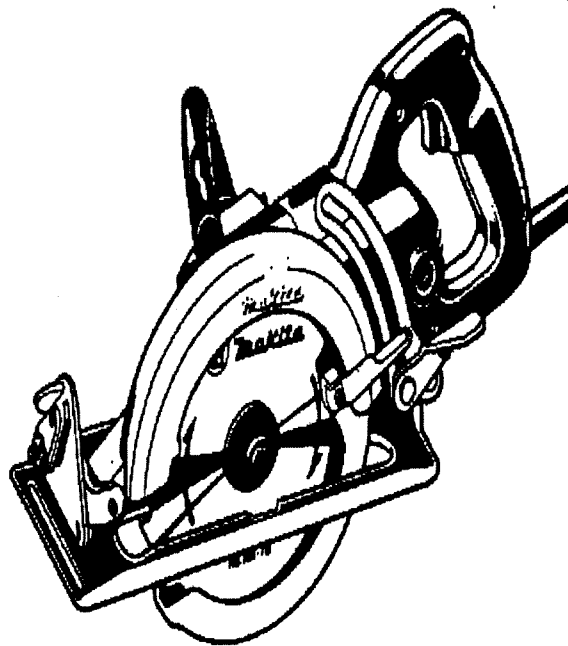
“a flaw in his plan” “don’t draw on the sheet”

Words to Spell:

aw

(as in saw)

(at the end of a word)

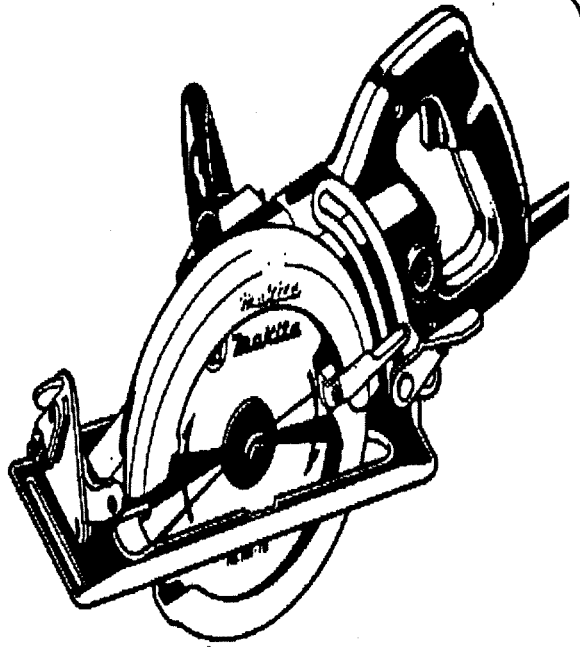


claw thaw flaw straw law raw draw jaw

aw

(as in saw)

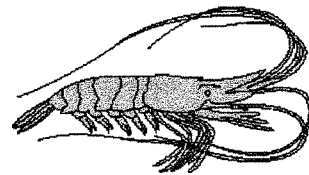
(at the end of a word or when
followed by a single "l" or "n")



draw thaw straw claw flaw law

brawn crawl yawn brawl prawn

aw



(as in prawn)
(at the end of a word)
(or when followed by “l” or “n”)

awl bawl brawl drawl crawl shawl
pawn fawn yawn spawn drawn prawn

“the child bawled” “got into a brawl” “wore a shawl”

“the deer and fawn” “do not yawn in the class”

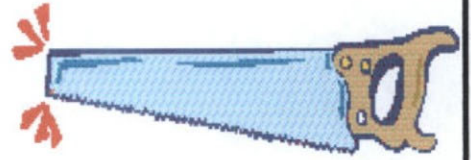
“had drawn on the wall” “ate a prawn”

Words to Spell:

aw

(as in *saw*)

(at the end of a word)



law

raw

paw

jaw

claw

flaw

draw

thaw

straw

“raw fish for lunch” “hurt his large paw” “hurt his jaw”

“the ice thawed” “a straw hat” “a flaw in the gem”

“grabbed the fish with its claw” “draw a bird”

Words to Spell:
